



INTEGRATED SECURITY SOLUTION FOR HOTEL

-Safe
-Convenient
-Integrated



Public Safety

- Video Surveillance
- Mobile Surveillance
- Smoke Detector



Parking

- ANPR
- Video Surveillance



Room Management

- Hotel Lock
- Access Control



Central Management

- All-in-one Management Platform
- Video Wall

Key Hotel Challenges

As trade and tourism continue to develop, the demand for hotels increases due to a rise in business trips and travel.

Making the hotel a more comfortable environment and increasing management efficiency have become the biggest challenges in the industry.





HOTEL LAYOUT



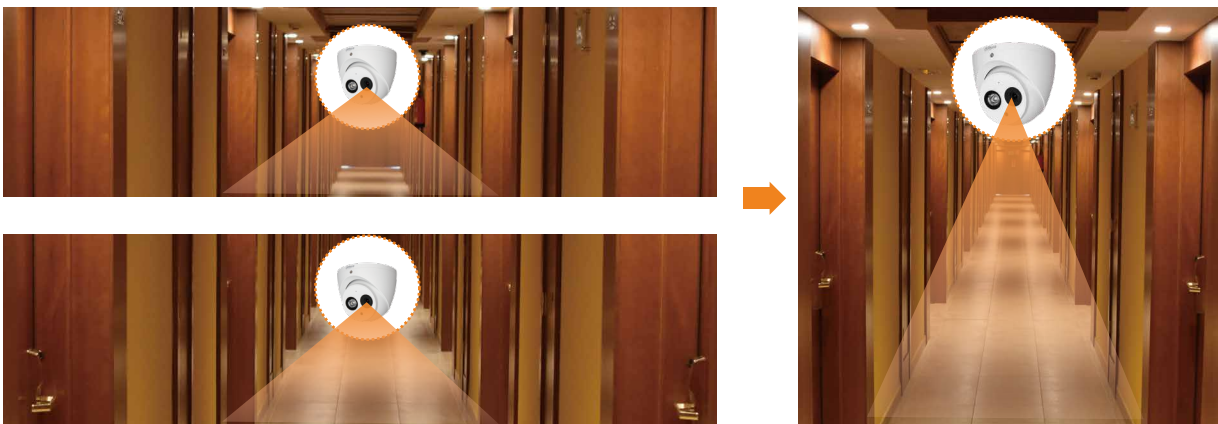
APPLICATION AREA

Public Area

- Multi-sensor panoramic camera monitors the outdoor hotel area.

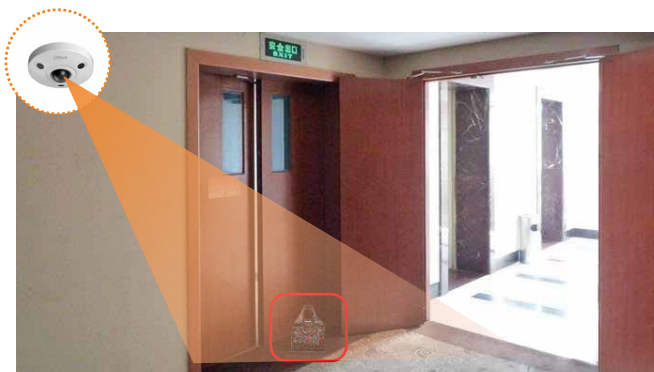


- Cameras with corridor mode monitor hallways and other long, narrow spaces. Costs are cut in half as one camera can cover an entire hallway instead of two.



Traditional hallway monitoring

Corridor mode



- IP cameras with smart detection functionality can automatically detect objects in predefined areas and trigger an alarm.



- The smoke detectors will trigger alarms when they detect smoke in public areas.

Lobby

- Lobby areas are the most frequently visited locations and require highly detailed facial images and no blind spots. The Ultra Smart fisheye with 360 degree overview ensures all corners are covered.



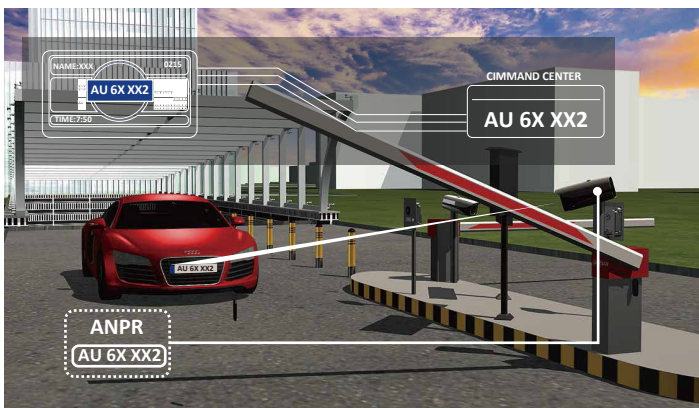
- During the daytime, sunlight can bring intense contrast into the lobby and at entrances. Cameras with true WDR ensure detailed video in all lighting conditions.



- Staff at the reception desk use hotel management software to check in and check out customers.



Parking



License plate recognition allows employees and management to conveniently enter the hotel parking area while effectively managing other vehicles.

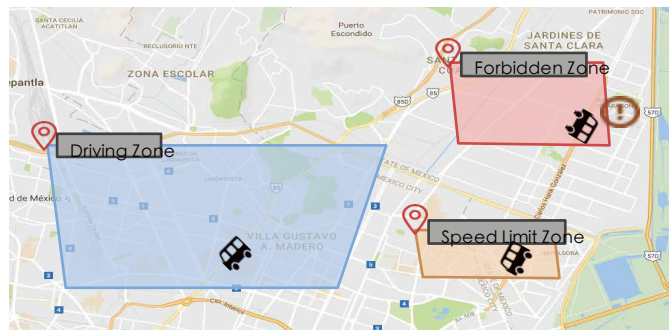
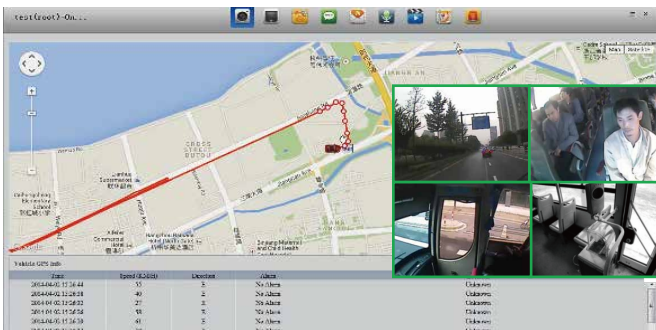
White list

Work offline

Night vision

Shuttle Bus

Mobile Surveillance: Real-time video and instrument information is transmitted remotely to the control center via 3G/4G.



Remote Monitoring

Real-time video is transmitted remotely to the control center via 3G/4G.

Alarm Notifications

The control center is notified of onboard incidents instantly through 3G or 4G networks.

Speed Alerts

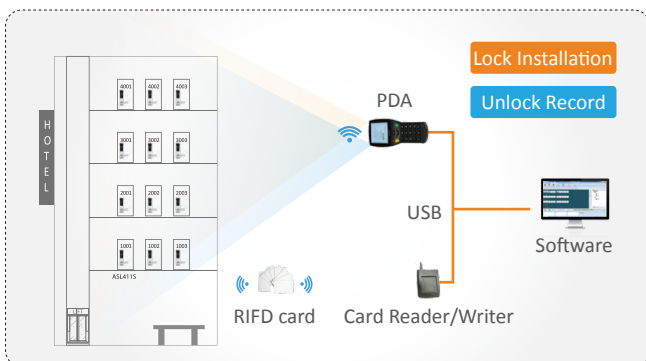
Live updates and alerts on bus location, direction, and speed allow administrators to immediately intervene and speak to drivers through audio communication.

E-Fence

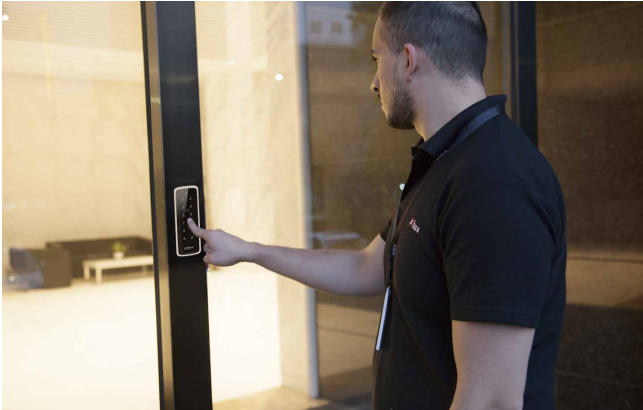
Various zones such as speed limit zones, driving zones, forbidden zones, departure zones and arrival zones can be set on the client e-map to ensure safe driving behaviors.

Hotel Room

The hotel lock system provides safe and convenient hotel room management for guests.



Meeting Room



Access control for meeting rooms allows authorized personnel to conveniently enter and exit, while keeping unauthorized personnel out.



LCD Splicing Screen

High-end conference environment: The video wall displays important information in HD quality, creating a great experience for guests.

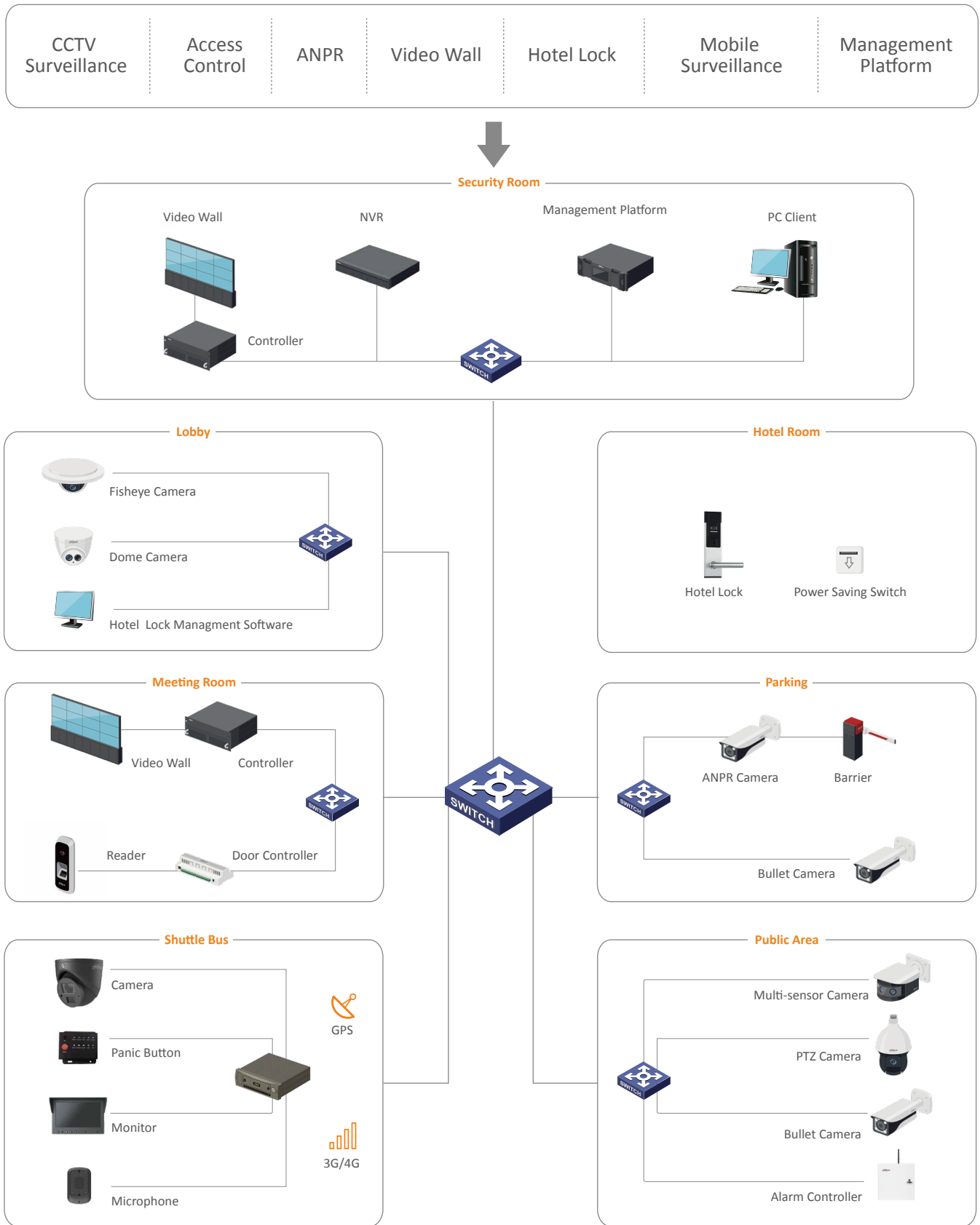
Management Room

As the security center of a hotel, security guards can view live video feeds on the video wall. When emergencies arise, they can quickly locate the scene and immediately coordinate a response.



SYSTEM STRUCTURE

Hotel Overview



KEY TECHNOLOGY

Panoramic Stitching

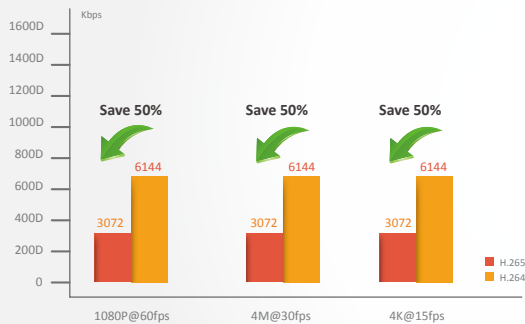
The 180° Multi-sensor camera stitches together the separate video streams from each sensor to form a single image for full situational awareness.



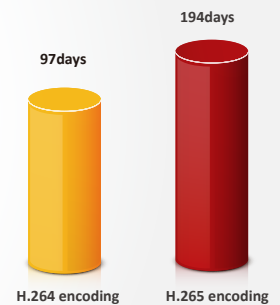
H.265 Encoding

- Compared with H.264, saves up to 50% bandwidth.

- H.265 uses half of the disk space, greatly reducing storage costs.



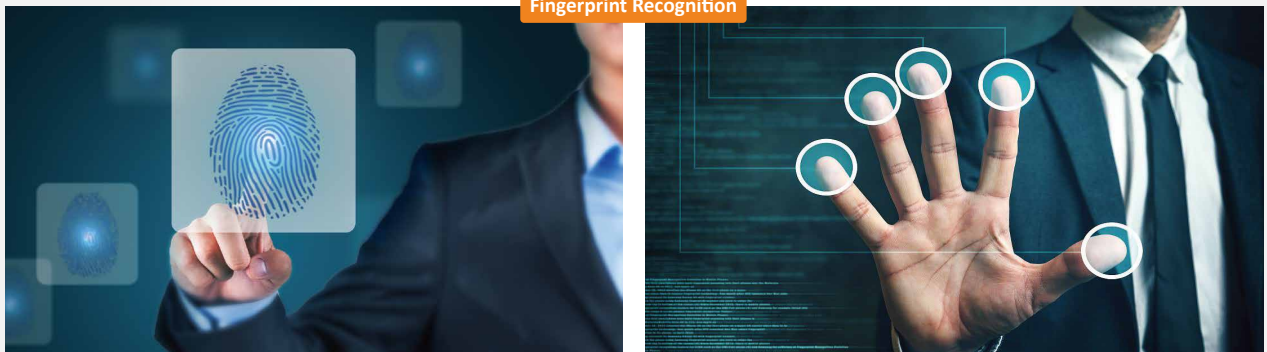
Days full-HD video can be stored on a 4TB HDD



Biometric Identification

- Biometric Identification Technology provides features such as fingerprint verification.

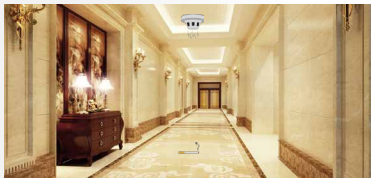
Fingerprint Recognition



Video Linkage

When alarm events occur, the system delivers a video message to the management center which is displayed on the video wall and in a pop-up window, allowing security workers to instantly respond to a situation.

Alarm Event



Alarm Detector



Illegal Access

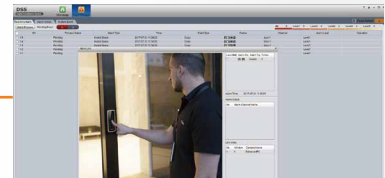


DSS

Video Linkage



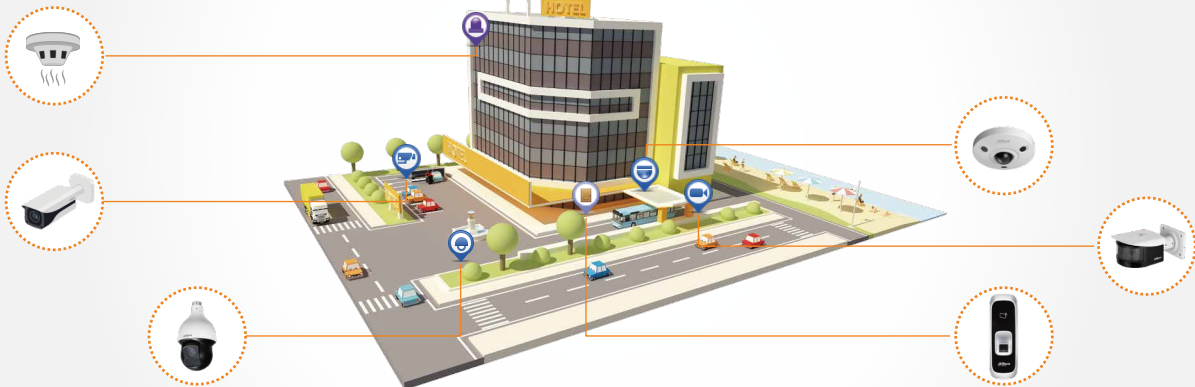
Video Wall



Pop-up Window

E-Map

The e-map provides a detailed overview of the location and status of each device on the system. Select devices to remotely control and monitor.



All-In-One Management Platform

The Dahua all-in-one management platform includes functions for CCTV surveillance, access control, entrance control, video wall, mobile surveillance, and more. It delivers an easy to operate, high performance, high efficiency, high stability, cost effective, one-stop solution.



PRODUCT SHOWCASE

PFW8800-A180



- Four 1/2.8" 2Mp progressive scan STARVIS™ CMOS
- H.265/H.264 triple-stream encoding
- Max 25fps@4096x1800
- Supports 180-degree panoramic view
- Day/Night(ICR), 3DNR, AWB, AGC, BLC
- Smart detection
- Intelligent Function
- Max. IR LEDs length 30m

IPC-HDW4231EM-AS



- 1/2.8" 2Mp progressive scan STARVIS™ CMOS
- H.265 & H.264 triple-stream encoding
- 50/60fps@1080P(1920x1080)
- Smart detection supported
- WDR(120dB), Day/Night(ICR), 3DNR, AWB, AGC, BLC
- Multiple network monitoring: Web viewer, CMS(DSS/PSS) & DMSS
- 2.8mm fixed lens (3.6mm,6mm optional)
- Built-in Mic
- Max. IR LEDs Length 50m
- Micro SD memory, IP67, PoE

IPC-HFW4231B-AS



- 1/2.8" 2Mp progressive scan STARVIS™ CMOS
- H.265&H.264 triple-stream encoding
- 50/60fps@1080P(1920x1080)
- Smart Detection supported
- WDR(120dB), Day/Night(ICR), 3DNR, AWB, AGC, BLC
- Multiple network monitoring: Web viewer, CMS(DSS/PSS) & DMSS
- 3.6mm fixed lens (6mm optional)
- 1/1 Alarm in/out, 1/1 audio in/out
- Max. IR LEDs Length 50m
- Micro SD memory ,IP67, PoE

IPC-HDBW4231F-AS



- 1/2.8" 2Mp progressive scan Exmor CMOS
- H.265&H.264 triple-stream encoding
- 50/60fps@2M(1920x1080)
- Smart Detection supported
- WDR(120dB), Day/Night(ICR), 3DNR,AWB,AGC,BLC
- Multiple network monitoring: Web viewer, CMS(DSS/PSS) & DMSS
- 3.6mm fixed lens (2.8mm, 6mm optional)
- Max. IR LEDs Length 20m
- Micro SD memory, IP67, IK10, PoE

SD59230U-HNI



- 1/2.8" 2Mp STARVIS™ CMOS
- Powerful 30x optical zoom
- Starlight technology
- H.265 Encoding
- Max. 50/60fps@1080P, 25/30/50/60fps@720P
- Auto-tracking and IVS
- Supports PoE+
- IR distance up to 150m
- IP66

IPC-EBW8630



- 1/1.8" 6Mp progressive scan STARVIS™ CMOS
- H.265/H.264 triple-stream encoding
- Max 25/30fps@6M(3072x2048)
- Multiple dewarped Mode
- Day/Night(ICR), 3DNR, AWB, AGC, BLC
- Smart detection
- Intelligent Function
- Max. IR LEDs length 10m
- Micro SD memory, IP67, IK10, PoE

PRODUCT SHOWCASE

ITC237-PW1B-IRZ



- Embedded with LPR algorithm inside the camera.
- Supports plate cutout, overview picture snapshot and video recording
- Embedded with White list database, control the barrier
- Powerful 2.7-12mm motorized lens and IR light, ideal for monitor ANPR distance as 3~8m
- Wide working temperature, IP67, IK10 and superior performance for outdoor applications
- True WDR technology

HAC-HMW3200



- Max 30fps@1080P
- HDCVI output (Aviation connector)
- 3.6mm fixed lens (2.8mm optional)
- Max. IR length 20m, Smart IR
- IP67, DC12V
- Shock-proof

HAC-HDBW2231F-M



- Starlight, 120dB true WDR, 3DNR
- Max 30fps@1080P
- HDCVI output (Aviation connector)
- 3.6mm fixed lens (2.8mm, 6mm optional)
- Max. IR length 20m, Smart IR
- IP67, IK10, DC12V
- Shock-proof

HAC-HDW1220G-M



- Max 30fps@1080P
- HDCVI output (Aviation connector)
- 3.6mm fixed lens (6mm optional)
- Max. IR length 20m, Smart IR
- IP67, DC12V
- Shock-proof

MCVR5104



- Supports HDCVI/Analog Video input
- H.264 dual-stream video compression
- Supports 2 ch 1080P+2 ch 720P realtime recording
- VGA/TV simultaneous video output
- Supports 1 SATA HDD, 2 USB2.0
- Aviation connectors adopted
- Multiple monitoring: Web viewer, CMS(DSS) & DMSS

NVR5864-16P-4KS2



- H.265/H.264/MJPEG/MPEG4 codec decoding
- Max 320Mbps incoming bandwidth
- Up to 12Mp resolution preview&playback
- 2HDMI/VGA simultaneous video output
- 3D intelligent positioning with Dahua PTZ camera
- Supports RAID 0 /1/5/6/10

PRODUCT SHOWCASE

ASL411S



- Stainless steel panels and handles, sturdy and durable
- Mifare1 card (IC card)
- Spare mechanical keys solve any emergency
- Lock failure/ Low voltage alarm
- Wireless installation
- The handle turns freely when access is not authorized
- Multi-management

T86M1Y



- IC (Mifare) card to gain power
- Hotel room guest card associated
- 180~240V

ASR1201D



- RS-485 protocol
- RS485, Wiegand34/26 protocol (Default 34)
- 13.56MHz (Mifare)
- 125KHz (EM-ID)
- Red and Blue LEDs
- Watch dog function ensure device free from halting
- Water-proof (Outdoor use)
- Surface/Flush mounted installation
- IP65

ASR1102A



- RS-485 protocol
- Default IC (Mifare) card ("-D" means ID EM card)
- Supports card, fingerprint
- Up to 3000 fingerprints capacity
- Blue backlight
- Watch dog function ensure device free from halting
- Beep and indicator
- Surface mounted installation

ASI1212D



- Touch keyboard and LCD display
- 30,000 valid cards & 150,000 records
- Supports multiple cards(default IC card) ("-D" means ID EM card)
- Supports card, password, fingerprint and combination
- TCP/IP to PC, support WAN communication
- Support P2P add device
- Wiegand or RS-485 interface to reader
- Door time out alarm, intrusion alarm, duress alarm and tamper alarm
- Anti-passback, multi-card open
- 128 efficient time and holiday schedules
- USB import/export configuration or log file

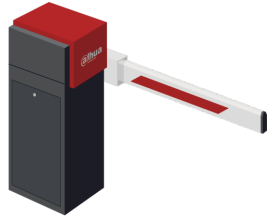
ASC1204B



- 100,000 valid cards & 300,000 records
- Supports multiple cards
- Supports card, password, fingerprint and combination
- TCP/IP interface to PC
- Wiegand or RS-485 interface to readers(2/4 door)
- Door time out alarm, intrusion alarm, duress alarm and tamper alarm
- Anti-pass back, multi-door interlock, multi-card open
- 128 efficient time and holiday schedules
- Watch dog function ensure device free from halting
- Surface mounted installation

PRODUCT SHOWCASE

IPMECD-2012A(L/R)



- Power source: AC220V 50Hz/ AC110V 60Hz
- Consumption: 150W
- Speed: 1.5- 6 seconds (optional)
- Working temperature:-20°C to +85°C
- Arm length: 3 to 6 meters (optional)
- Working humidity: 5% to 95%
- Size: 390x340x1020MM (LxWxH)

ARC9016C-G



- 16 on-board zones, expansion to 256 zones (ARM801/802/911/921)
- Up to 8 partitions
- 4 alarm out, expansion to 64 (ARM911/921)
- 8 alarm keypad (ARK10C)
- 2 pairs of MBus line, up to 2.4km for each bus line
- TCP/IP, 2G(-G only),PSTN

DSS7016D



- Embedded Linux System, C/S Architecture
- 7x24 stable operation
- Tour Plan function
- Supports various reports
- Supports ONVIF

M70-4U-E



- 19" standard 4U ATCA industry box
- 80ch@1080P or 320ch@D1 signal encoding (full configured)
- 80ch@4K or 320ch@1080P or 720ch@720P or 1500ch@D1 signal decoding (full configured)
- 320ch@1080P H.265 signal decoding(full configured)
- 240@D1 nonstandard stream signal decoding(full configured)
- max 60 screens splicing
- 6 RJ-45 gigabit network ports for matrix control, preview and online central storage

DHL32-F600



- Industrial level DID LCD panel, suitable for 24x7 display
- Physical resolution of 1920x1080
- High fidelity digital processing, brilliant and vivid video
- 5ms fast response time, no image ghosting
- Built-in speaker

DHL460UTS-E




- Industrial level DID LCD panel, suitable for 24x7 display
- High contrast and high brightness
- High fidelity digital processing and vivid video
- Built-in 3D COMB filter and 3D Noise Reduction
- Brightness smart detection, power-saving
- Tamper-proof metal housing, no radiation

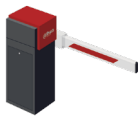
PRODUCT SHOWCASE

Product	Description	Public	Lobby	Room	Parking	Shuttle Bus	Security Center
 PFW8800-A180	4x2MP Multi-Sensor Panoramic Network IR Bullet Camera	●					
 IPC-HDW4231EM-AS	2MP IR Eyeball Network Camera	●	●				
 IPC-HFW4231B-AS	2MP WDR LXIR Bullet Network Camera	●			●		
 IPC-HDBW4231F-AS	2MP IR Mini Dome Network camera	●					
 SD59230U-HNI	2MP 30x Starlight IR PTZ Network Camera	●					
 IPC-EBW8630	6MP Panoramic Network IR Fisheye Camera		●				
 ITC237-PW1B-IRZ	2 Megapixel Full HD WDR Access ANPR Camera				●		
 HAC-HMW3200	2MP Mobile HDCVI IR Cube Camera					●	

PRODUCT SELECTION

Product	Description	Public	Lobby	Room	Parking	Shuttle Bus	Security Center
 HAC-HDBW2231F-M	2MP Mobile HDCVI IR Dome Camera					●	
 HAC-HDW1220G-M	2MP Mobile HDCVI IR Eyeball Camera					●	
 MCVR5104	4 Channel Mobile HDCVI DVR					●	
 NVR5864-16P-4KS2	64 Channel 2U 16PoE 4K & H.265 Pro Network Video Recorder						●
 ASL411S	Hotel Electronic Lock			●			
 T86M1Y	Hotel Power Switch (Guest card associated)			●			
 ASR1201D	Slim Water-proof RFID Reader			●			●
 ASR1102A	Fingerprint RFID Reader			●			●

PRODUCT SELECTION

Product	Description	Public	Lobby	Room	Parking	Shuttle Bus	Security Center
 ASI1212D	Water-proof Fingerprint Standalone			●			●
 ASC1204B	Four Door Access Controller			●			●
 IPMECD-2012A(L/R)	Barrier				●		
 ARC9016C-G	MBus Alarm Controller	●					
 DSS7016D	Management Platform						●
 M70-4U-E	Multi-service Video Management Platform			●			●
 DHL32-F600	32" Full-HD LCD Monitor		●				●
 DHL460UTS-E	46" Full-HD Video Wall Display Unit (Ultra Narrow Bezel 5.3mm)			●			●



QUALITY BY DESIGN

* Design and specifications are subject to change without notice.

Integrated Security Solution for Hotel - 01, Aug 2017



www.dahuasecurity.com

DAHUA TECHNOLOGY

No.1199 Bin'an Road, Binjiang District, Hangzhou, China. 310053

Tel: +86-571-87688883 Fax: +86-571-87688815

Email: overseas@dahuatech.com

www.dahuasecurity.com

